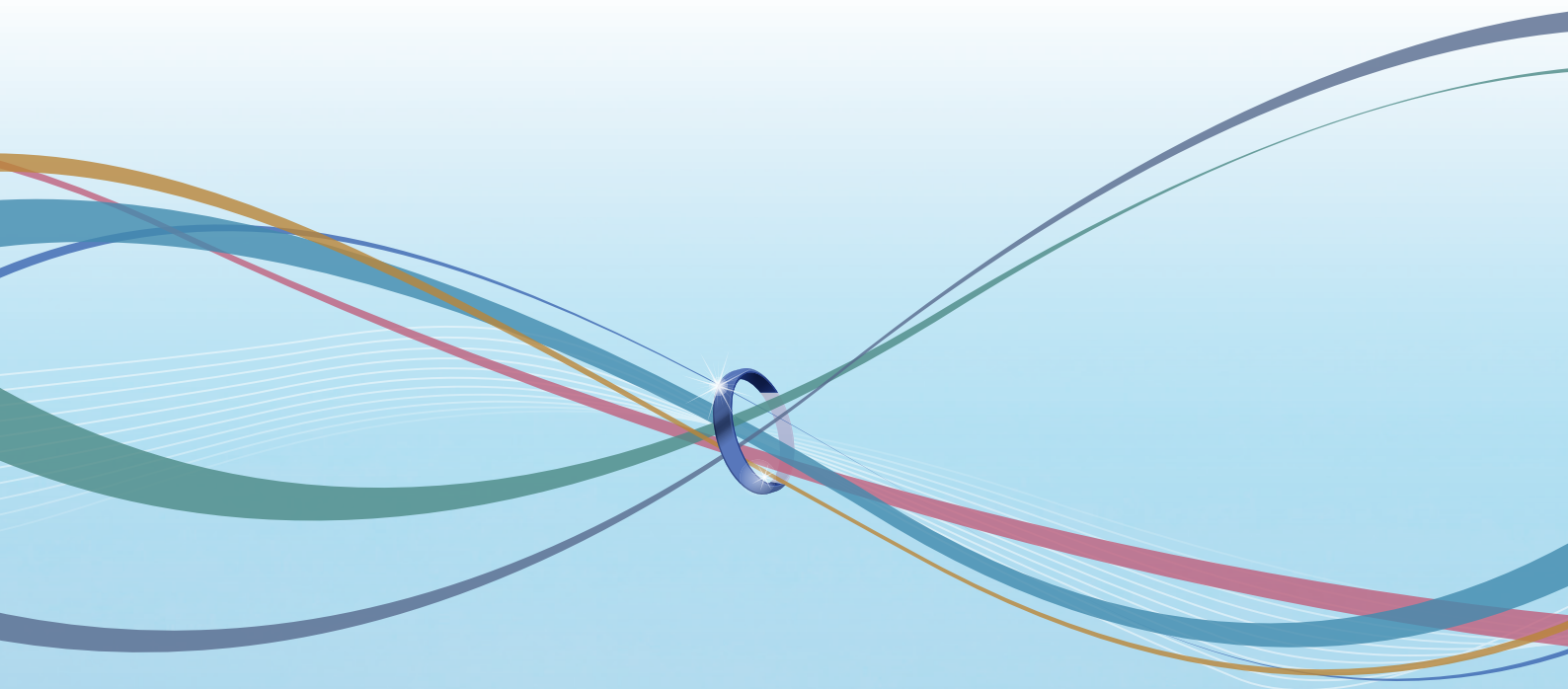


National University Corporation

Shizuoka University



About the University

Shizuoka University is a leading national university, located at the foot of Mount Fuji, the symbol of Japan. Renowned for its innovative research and forward-thinking educational practice, Shizuoka University plays an important role in cultivating young talents for the region and the world. Internationalization is one of the most important aspects of the university's promotion of diversity on campus. We actively promote international collaboration and open our academic community to the students and researchers of the world, in order to enhance academic excellence.

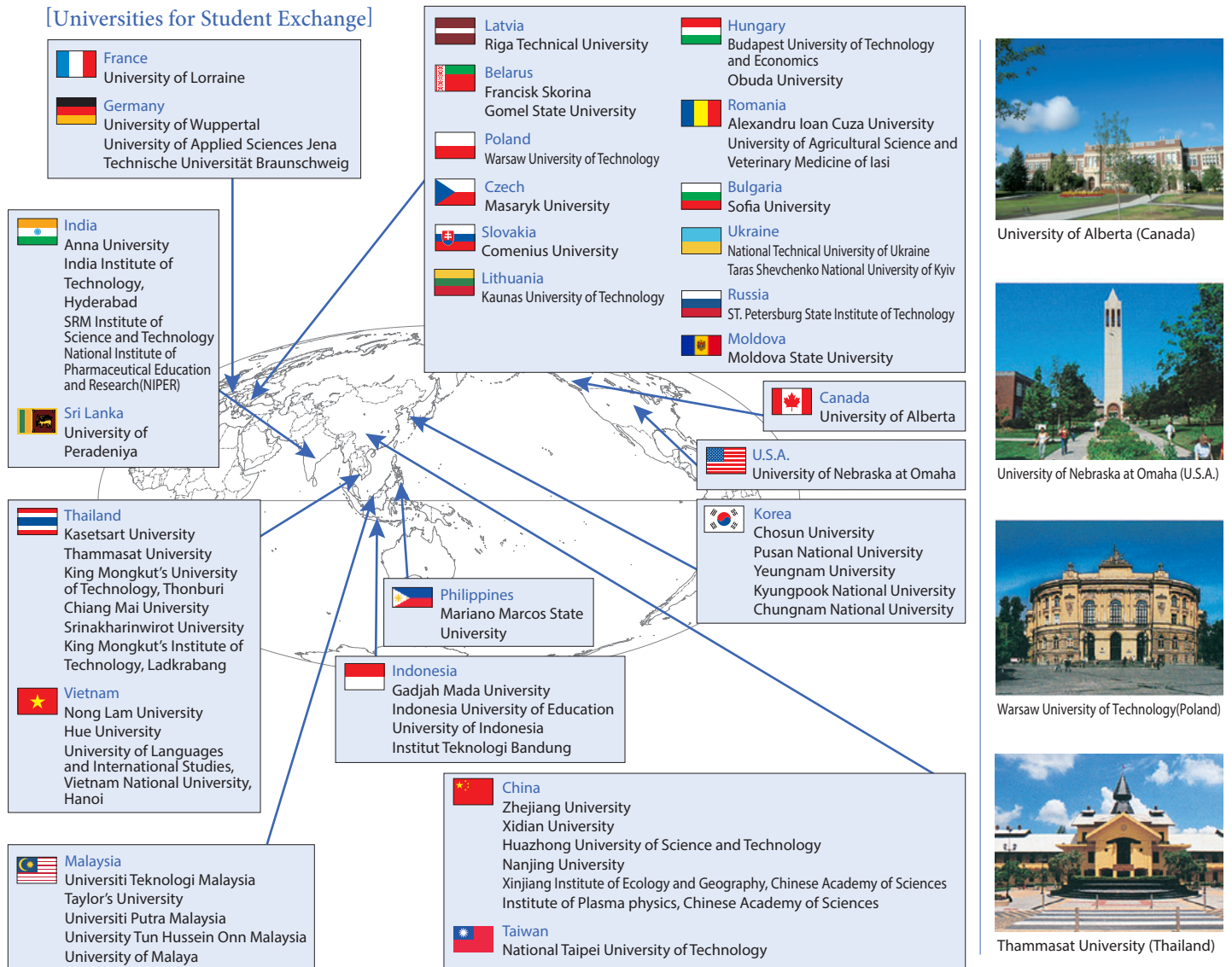
Founded	1949
Academic Faculty	655
Students	(Shizuoka) 5,758 (Hamamatsu) 4,384
International Students	(Shizuoka) 202 (Hamamatsu) 260

(May 2018)

Partner Universities

The university has entered academic exchange agreements with 59 universities in 26 countries and regions. At the faculty level, the university's various departments have entered into academic exchange agreements with 65 institutions in 22 countries.

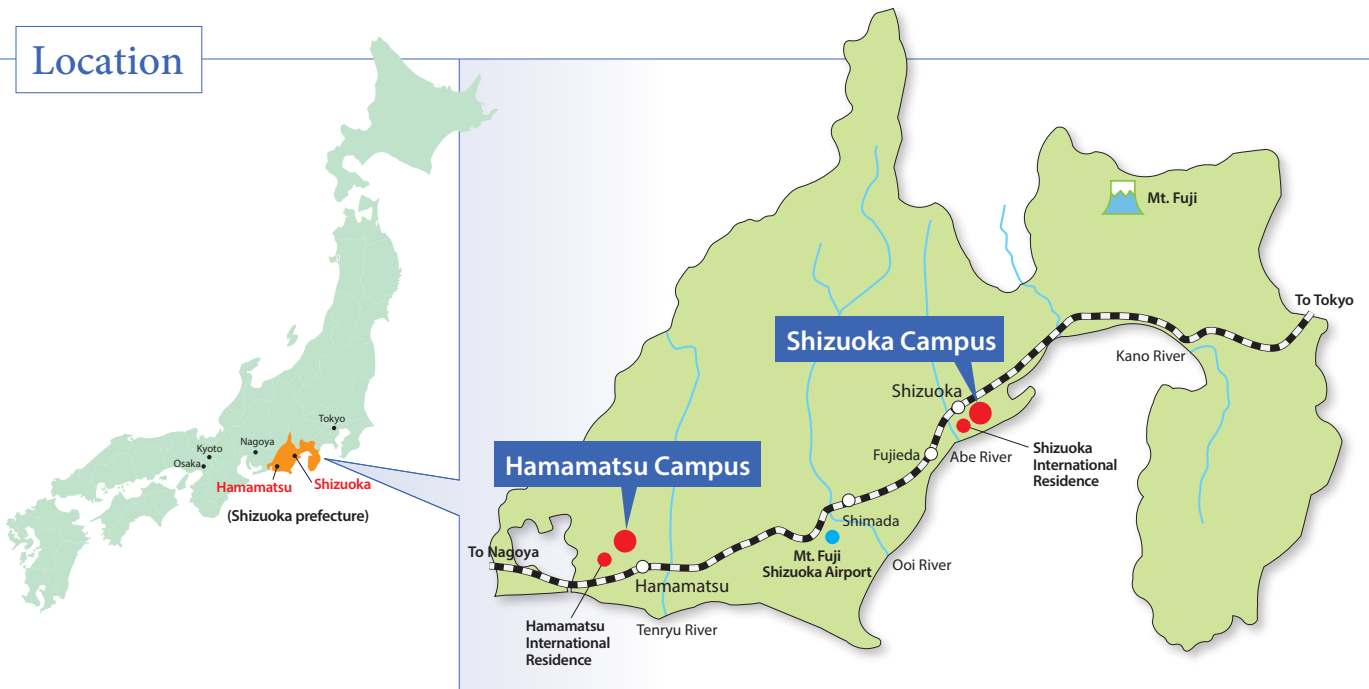
[Universities for Student Exchange]



Shizuoka Prefecture

Shizuoka Prefecture is situated in the center of the main island of the Japanese archipelago, between Tokyo and Osaka. It prospered as a strategic political and trading point along the Pacific Route. It is graced with a coastline that extends from the Izu Peninsula to Suruga Bay and the Sea of Enshu along the Pacific Ocean in the south, and is bordered in the north by the Southern Alps, with peaks that often rise more than 3,000 meters above sea level. The climate is mild throughout the year, and you can see many hillsides covered with groves of mandarin oranges and green tea plantations, which are Shizuoka's principal agricultural products. The prefecture is home to Fuji-Hakone-Izu National Park and Southern Alps National Park. There are many hot springs, especially on the Izu Peninsula, which attract tourists.

Location



Hamamatsu Campus

[Undergraduate]

- Informatics
- Engineering

[Graduate]

Integrated Science and Technology

- Department of Informatics
- Department of Engineering

Integrated Science and Technology, Educational Division

Medical Photonics

Shizuoka Campus

[Undergraduate]

- Humanities and Social Sciences
- Education, Science, Agriculture

[Graduate]

Humanities and Social Sciences

Education

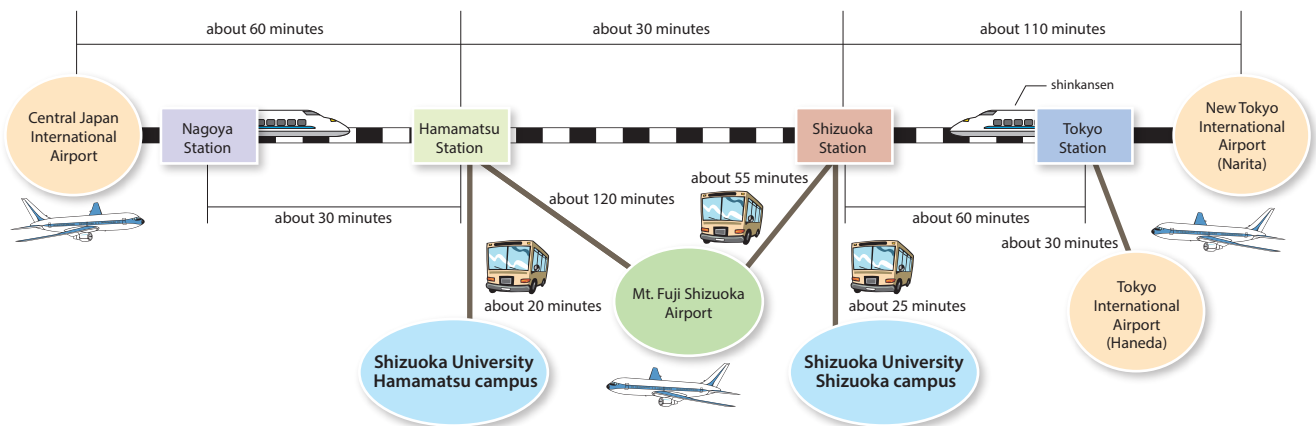
Integrated Science and Technology

- Department of Science
- Department of Agriculture

Integrated Science and Technology, Educational Division



Access



Mount Fuji

Mount Fuji is the highest mountain in Japan at 3,776 meters. It was registered as a UNESCO World Cultural Heritage Site in 2013. You can see a beautiful view of Mount Fuji from the university's Shizuoka campus on a clear, fine day.

*Photo is provided by the Shizuoka Prefectural Tourism Association:
<http://www.shizuoka-guide.com/index.html>



Faculty of Humanities and Social Sciences



<http://www.hss.shizuoka.ac.jp/english/>

One of the largest faculties in Japan of its kind with integrated courses in humanities and social sciences, which involve the study of various academic areas related to human life. Combining classwork and fieldwork, the faculty provides students with both a practical and in-depth knowledge of the areas of study.

Department of Social and Human Studies

The Department offers education in five areas: anthropology, sociology, psychology, cultural anthropology, and history. Students cultivate a



broad perspective on society and culture and a capacity for investigation, and will have many opportunities for interaction with the surrounding community.

Department of Language and Literature

The Department offers education in three areas: languages and cultures of Japan and Asia, languages and cultures of North America and



Europe, and comparative linguistics and culture, with deep exploration in each specialty. Students may pursue their interests laterally through enrollment in courses offered by other departments.

Department of Law

Through broad study in the fields of law and politics, students will develop the capacity to analyze and address a wide range of modern social phenomena,



progressively deepening their education during a unified, four-year course of study in small-class settings.

Department of Economics

The Department draws on a wide range of specialist research, with attention to both modern society and history in Japan, Asia, North America, and Europe, to explore economics.



Students will participate in a stimulating, four-year unified series of seminars to cultivate their capacity for problem identification and solving.



Campus Character
"Shizuppi"



Faculty of Education



[http://www.ed.shizuoka.ac.jp/\(Written in Japanese\)](http://www.ed.shizuoka.ac.jp/(Written in Japanese))

The Teacher Training Program sets great store on practical learning, providing many face-to-face experiences with children.

Training Course for School Teachers

The Program cultivates teachers with broad general education, rich humanity, and advanced knowledge and skills. Each year it sends numerous capable individuals equipped with practical instructional skills into the front lines of education.



■ Subject Education

Japanese Language Education	Social Studies Education
Mathematics Education	Science Education
Music Education	Art and Design Education
Health and Physical Education	Technology Education
Home Economics Education	English Education

■ Developmental Education

Practical Education	Educational Psychology
Early Childhood Education	

■ Education for Children with Special Needs

■ Major in Elementary Learning Development

■ Major in Coordinated School Health (Yogo) Education

■ University-wide Undergraduate Education Program

School of Regional Development

This special school has five bachelor's degree courses, including courses for Regional management, Inclusive community, Regional environment and disaster measures, Art and art management and Sports promotion. The core of the curriculum is interdisciplinary study and hands-on field studies conducted throughout the Shizuoka region.



Faculty of Informatics



<http://www.inf.shizuoka.ac.jp/english/index.html>

Our faculty combines informatics educational expertise in both the humanities and science-technology.

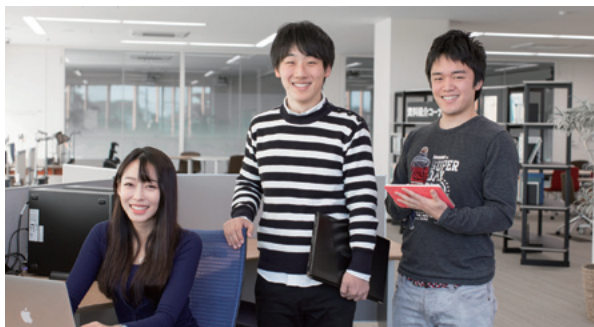
Department of Computer Science

This department's philosophy of integrating the humanities and sciences allows students to attain extensive knowledge and a high degree of expertise in information and communication technologies.



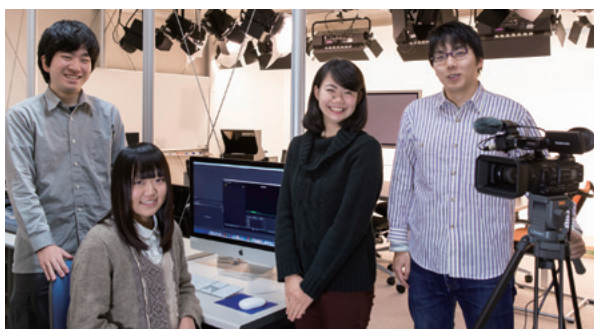
Department of Behavior Informatics

Students in the department develop the skills to creatively design information services and to use data science to analyze big and rich data sets. This department also aims to give students the solid grounding they need to formulate corporate and other organizational business strategies and to plan, implement and build information services that are highly attuned to daily life.



Department of Socio-Information Studies

This department addresses the possibilities as well as the dangers of information technology and systems, and considers the objectives and issues of today's "information society" from the dual perspectives of media and community.



Faculty of Science



<http://www.sci.shizuoka.ac.jp/english/>

We inquire into fields of pure science such as natural phenomena, biology and life science, material science, the universe, and mathematics. The curriculum includes many experiments and learning opportunities which encourage students to apply their own thinking to research.

Department of Mathematics



The Department cultivates the capacity for imagination and precise thinking along with mathematical ability and the ability to think logically. We develop educators who can bring new viewpoints and perspectives to today's education in mathematics.

Department of Physics



Students will study physics and mathematical methods through a wide range of practical training centered on lectures in mathematics and basic science with the goal of becoming skilled, dedicated professionals in fields ranging from electronics and information to academia and teaching.

Department of Chemistry



The Department is home to specialists in a wide range of chemistry, including organic, inorganic and analytical chemistry, biochemistry, structural and physical chemistry, and chemical reaction dynamics. Students will develop direct knowledge through a curriculum that stresses experimentation.

Department of Biological Science



Students will be educated to have broad vision and research expertise in biological science. For this purpose we provide an integrated educational program that includes lectures, practical and laboratory training, which covers a wide spectrum of biology ranging from molecular to environmental level.

Department of Geoscience



Students will explore a wide variety of geoscience phenomena, including earthquakes, volcanism, magma, crustal movement, metamorphism, and plate movement, with many opportunities to get out and collect data and samples.

Creative Science Course: Global Innovation



This program aims to encourage students to develop their innovative and global outlooks through the study of science. During their first year, students are given opportunities to explore their major through lectures from all the five departments of the faculty. It also offers intensive study in English and many research projects throughout the course.

Faculty of Engineering

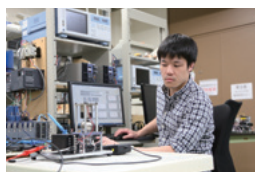


<http://www.eng.shizuoka.ac.jp/en/>

We cultivate students who can make an impact on the world by acting as leaders in local communities and industrial fields, who honor the spirit of "Freedom and Enlightenment based on a Philanthropic Heart," whose ideal is service in the creation of an abundant human future, and who possess fundamental ability and practical capabilities in manufacturing.

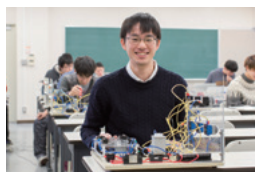
Department of Mechanical Engineering

At their 3rd year, students choose their specialized area of study, from following 3 courses (i) Aerospace and Environmental Engineering, (ii) Intelligent Processing and Materials Engineering, and (iii) Opto-Electronics and Precision Engineering. Our department produces engineers with excellent knowledge and technical skills in mechanical engineering along with the strong sense of social responsibility.



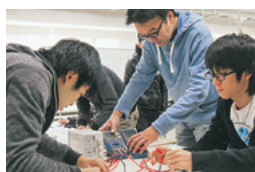
Department of Electrical and Electronic Engineering

From their 2nd year, students learn specialist knowledge in the area of (i) Information Electronics or (ii) Energy and Electronic Control. The department aims to produce international engineers who have good basic skills, practical skills, and state-of-art technological skills to contribute to the further advancement of electronics industrial nation, Japan.



Department of Electronics and Materials Science

The department offers practical education and research related to electronic physics engineering, materials chemistry, energy industry, transport equipment industry (such as automotive industry), as well as related to basic electronic devices and energy-related devices for the development of electrical and electronic equipment industry. Available programs consist of Course of Electronics and Devices and Course of Materials Science and Engineering.



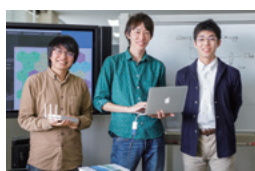
Department of Applied Chemistry and Biochemical Engineering

The department offers practical education and research related to the development of environment-conscious, highly-functional materials and environment-friendly biotechnologies; for example, creating new products based on organic and inorganic chemistry, chemical engineering, and bioengineering. Available programs consist of Course of Applied Chemistry and Course of Chemical and Bioengineering.



Department of Mathematical and Systems Engineering

The department trains system engineers, who can design sustainable systems solving large complex problems such as computer systems, plants, business systems, and environmental systems. Students study i) Mathematical science methods including modeling, simulation, and optimization, ii) Fundamentals of information science including programming and algorithms, and iii) Environmental science including risk analysis.



Faculty of Agriculture



http://www.agr.shizuoka.ac.jp/index_en.html

We aim to create a renewable society where man and nature coexist, and to foster human ability that is adaptable in a global society. Focusing on the traditionally developed "science of bio-production," we provide a broad education based on field sciences.

Department of Bio-Resource Sciences

Students can choose a specialist course after enrolling, with the choices being Plant biological science, Wood science, Geo-ecology and environmental science, or Agriculture and food community design.



Department of Applied Life Sciences

Students study about the nature of biological matter and its interaction with the environment from interdisciplinary approach based on chemistry and biology. The department provides excellent opportunities for research in biological science with its state-of-the-art facility.



Research Institutes

Research Institute of Electronics

<https://www.rie.shizuoka.ac.jp/?en>

Divisions: Nanovision Research, Advanced Device Research, Nanomaterials Research, Biomedical Photonics Research

Founded in 1965, the institute has established a reputation for state-of-the-art research in the fields of Nanovision, Nanomaterials and Biomedical technology. The institute has also been proceeding international collaborations and joint research with prominent universities and research centers in the world.

Research Institute of Green Science and Technology

http://www.green.shizuoka.ac.jp/index_e.html

Divisions: Green Energy Research, Green Biology Research, Green Chemistry Research

The institute promotes green innovation for waste management, renewable energy generation and utilization and the creation of new biotechnologies through fundamental and applied research.

Master's Courses

Graduate School of Humanities and Social Sciences

<http://www.hss.shizuoka.ac.jp/english/gradu.html>

Departments: Clinical Human Sciences, Comparative Studies in Languages and Culture, Economics

The Graduate School of Humanities and Social Sciences is a new type of integrated humanities graduate school, established with the goal of developing researchers with both specialist and interdisciplinary expertise. In terms of scale, the school's programs set a national standard for universities. With a staff of eighty scholars in three principal departments, the school is producing advanced research across a wide range of areas.

Graduate School of Education

[http://www.ed.shizuoka.ac.jp/\(Written in Japanese\)](http://www.ed.shizuoka.ac.jp/(Written in Japanese))

Department: School Education Research Professional Degree Course: Division of Advanced Practice in School Education

The Department of School Education Research pursues wide-ranging study that builds on general and specialist university-level education. The School engages in research aimed at cultivating instructors with advanced specialist capacities. The Division of Advanced Practice in School Education offers education to enable teachers to build the schools of tomorrow. The School also offers education to develop practicing teachers into future educational leaders with practical teaching capacity.

Graduate School of Integrated Science and Technology

Department of Informatics

<http://www.inf.shizuoka.ac.jp/english/graduate/index.html>

Courses: Informatics

In response to the rapid and radical informatization of society, the Department strives to meet the challenges facing Japan and international society from a perspective that combines computer science technology and information arts. The Department promotes the advancement of informatics as an academic discipline, and cultivates the specialist professionals required by the advanced information-oriented society.

Department of Science

<http://www.sci.shizuoka.ac.jp/english/>

Courses: Mathematics, Physics, Chemistry, Biological Science, Geosciences

The Department offers five majors in the fundamental fields of Mathematics, Physics, Chemistry, Biological Science, and Geosciences. Through the pursuit of scientific ideas, we explore universal truths of the universe, life, matter, and mathematical principles, and develop expert researchers who can contribute research results in such areas as applied scientific research and industrial activities.

Department of Engineering

<http://www.eng.shizuoka.ac.jp/en/>

Courses: Mechanical Engineering, Electrical and Electronic Engineering, Electronics and Materials Science, Applied Chemistry and Biochemical Engineering, Mathematical and Systems Engineering, Management of Business Development

The Department's basic philosophy is to work for the abundant prosperity of humanity through the coexistence of nature, science, and technology. The Department develops high-level researchers and scientific technicians with cutting-edge expertise. Shizuoka Prefecture is home to numerous venture companies and highly innovative enterprises, and the Department is leveraging that environment to engage in a range of research that brings together industry and the university.

Department of Agriculture

http://www.agr.shizuoka.ac.jp/gra/index_en.html

Courses: Biological and Environmental Sciences, Applied Biological Chemistry, Environment and Forest Resources Science, Development of Agriculture Business Entrepreneur

The Department focuses on environmental issues as an important pillar in which 21st century agricultural fields play a critical role. The Graduate School aims to enrich its further educational and research activities. There has been the Research Institute of Green Science and Technology on the Shizuoka Campus, which is equipped with the most advanced experimental apparatuses. The Department is engaged in the most advanced research, in an appropriately ideal environment for agricultural research.

3-year Doctor's Courses

Graduate School of Education

[http://subdev.ed.shizuoka.ac.jp/\(Written in Japanese\)](http://subdev.ed.shizuoka.ac.jp/(Written in Japanese))

Department: Cooperative Doctoral Course in Subject Development

The Joint Doctoral Course in Subject Development is a 3-year doctoral course established in the Graduate School of Education in collaboration with Aichi University of Education. Shizuoka University is engaged in the development of human resources who, with combined theoretical and practical skills, are capable of conducting advanced research and education.

Graduate School of Medical Photonics

<http://www.cmp.shizuoka.ac.jp/>

Department: Cooperative Major in Medical Photonics

A Cooperative Major in Medical Photonics has been established by combining Shizuoka University's opto-electronics technology-based engineering with Hamamatsu University School of Medicine's track record and environment for photomedicine education and research in order to train experts in medical photonics. The curriculum development and implementation are conducted jointly by the two universities.

Graduate School of Science and Technology, Educational Division

<http://gsst.shizuoka.ac.jp/en/>

Departments: Nanovision Technology, Optoelectronics and Nanostructure Science, Information Science and Technology, Environment and Energy Systems, Bioscience

The Graduate School provides advanced education from a perspective that incorporates the unique features of the Shizuoka Prefecture region and its current needs. To develop researchers and technical specialists with deep knowledge, broad general education, and a strong international orientation, the Graduate School offers five specialized doctor's programs, which are closely related to the master's programs at Graduate School of Integrated Science and Technology.

United Graduate School (3-year Doctor's Course)

Doctoral Course in the United Graduate School of Agricultural Science, Gifu University

<http://www1.gifu-u.ac.jp/~rendai/eng/>

Science of Biological Production, Science of Biological Environment, Science of Biological Resources

Through the intimate link between the Gifu University Graduate School of Natural Science and Technology and the Shizuoka University Graduate School of Integrated Science and Technology, a unique educational and research program has been established, where high level professional and rich scholarship with broad vision may be fostered in the researchers who partake in our biological production, bioenvironmental, biological resource and various other science programs. Also, the Graduate School progressively accepts international students who wish to learn high scholarship and advanced technology. Professors advising graduate Students at the participating universities are appointed as instructors for students enrolled in the United Graduate School.

How to Apply

Undergraduates:

Shizuoka University has 6 faculties, and each of them has specific requirements for eligibility and subjects on their examination. Applicants should check the admissions guidelines online (only available in Japanese, <http://www.shizuoka.ac.jp/nyushi/>), and confirm the requirements prior to their application.

Graduates:

Each graduate school conducts its own admissions to graduate courses. Applicants should consult the graduate school's admissions guidelines online first to check their requirements. Graduate school courses for Informatics, Engineering, Agriculture and Science are conducted in English, and for Humanities, Social Sciences and Education, in Japanese.

Research student:

Research students do independent research under the guidance of their academic supervisor. A person who has completed an undergraduate course or has completed the educational equivalent of an undergraduate course may be admitted as a research student. The period of attendance at school is between six months and one year. No degree is conferred. To be a research student, it is required to find an academic supervisor and get permission to study in her/his office or laboratory.

Asia Bridge Program (ABP):

ABP is a unique industry-academia collaborative program that offers a bachelor's program in Japanese and a master's program in English. ABP provides all students with financial aid. In addition to exemption from the application and enrollment fees, it guarantees that the first year's tuition is fully waived. For details on how to apply, please check the program's dedicated website: <http://www.abp.icsu.shizuoka.ac.jp/eng/>

* At Shizuoka University, international students are assisted by the advisory teaching staff and a tutor (student) as well as the academic supervisor. Shizuoka University and Organization for International Collaboration offer several types of Japanese Courses for the students whose Japanese level is low.

Fees (Tuition Fee, Admission Fee, Examination Fee)

(As of April, 2017)

Division	Tuition Fee (JPY)	Admission Fee (JPY)	Examination Fee (JPY)
Undergraduate	535,800 (Per Year)	282,000	17,000
	267,900 (6 months)		
Graduate	535,800 (Per Year)	282,000	30,000
	267,900 (6 months)		

Division	Tuition Fee (JPY)	Admission Fee (JPY)	Examination Fee (JPY)
Research Students	29,700 (per month × approved research period)	84,600	9,800
Auditors	14,800 (per one credit × number of credits the student is allowed to take)	28,200	9,800

* Tuition and other fees are subject to change.

* The undergraduate and graduate students whose finances make it difficult for them to pay their tuition may apply for partial or total exemption from tuition obligation.

Scholarships

Various governmental agencies and organizations offer scholarships for international students. Many of them are applicable only after the students have enrolled at a university in Japan. Shizuoka University also has its own financial aid program for international students.

Accommodation

Shizuoka University International Residence:

We offer rooms to international students for their first year of study. Applications for residence are accepted in June (for October occupancy) and January (for April occupancy). Due to limited capacity, not all applicants can be accepted. Residents need to pay a one-time expense when moving in on top of the monthly rent.

Shizuoka International Residence (3-4-6 Oshika, Suruga-ku, Shizuoka)

Type	Rooms	Rent/month (JPY)	Common service fees (JPY)
Single I (Unit type)	95	20,000	2,300
Single II	9	24,000	2,300
Twin	2	38,000	2,300 ⁺
Family	2	46,000	2,300 ⁺

Hamamatsu International Residence I (3-22-1, Shijimizuka, Naka-ku, Hamamatsu)

Type	Rooms	Rent/month (JPY)	Common service fees (JPY)
Single II	35	5,900	4,800
Twin	11	9,500	3,800 ⁺
Family	6	14,200	3,800 ⁺

Hamamatsu International Residence II

Type	Rooms	Rent/month (JPY)	Common service fees (JPY)
Single I (Unit type)	95	20,000	2,600

Dormitories:

Hamamatsu area has a dormitory "AKEBONO" (single room, 15,000 yen per month) where Japanese students and international students live together (Japanese female students 46, international students: male 32, female 13). There are also two dormitories in Shizuoka, "KATAYAMA" and "YUHO" (4 beds per room), and one in Hamamatsu, "AKATSUKI" (two beds per room).

Apartments:

For those interested in finding an apartment, please consult the University coop shop (located at both Shizuoka and Hamamatsu campuses), which will provide assistance. In Shizuoka and Hamamatsu areas, rent differs depending on how new the apartment facility is, and also whether it is furnished or not. A security deposit is generally equal to 3 months rent.

Area (m ²)	Kitchen	Toilet	Bath	Rent/month (yen)	Common Utilities/month (yen)
7.5-10	Shared	Shared	Shared	10,000-26,000	0-3,000
10-13	Private	Private	Private	25,000-63,000	0-4,000

